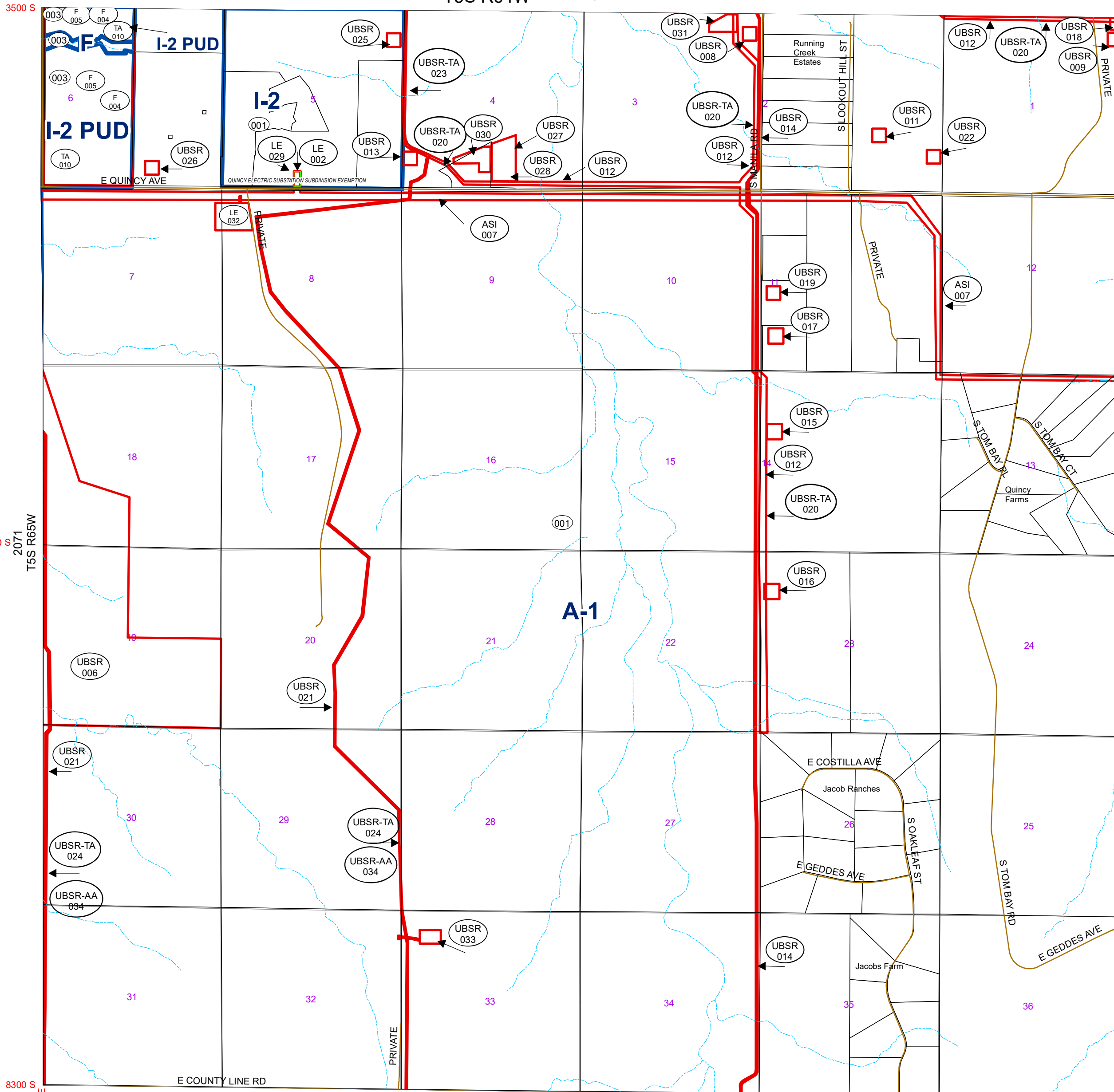
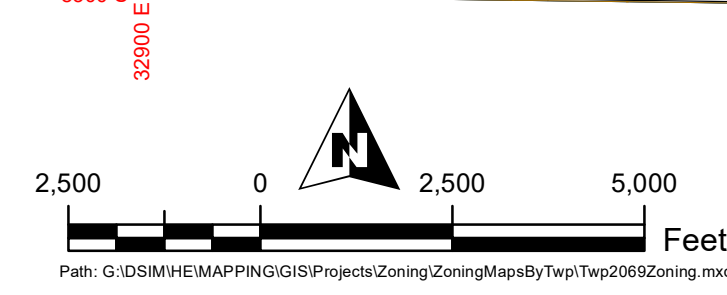


1979
T5S R64W T4S R64W



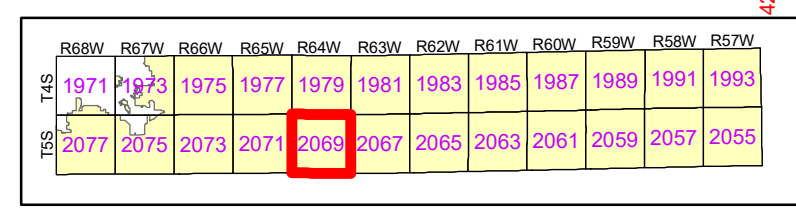
Revisions

Code	Date	Case	From	To
001	08/13/68	Zoning Revisions		A-1,I-2
002	07/16/96	L96-003		LE
003	01/19/99	Z98-017	A-1	I-2,F
004	05/18/99	P98-123		FDP
005	01/29/01	A00-037		FDP
006	07/08/08	U07-001		UBSR
007	04/05/11	AS110-001		ASI
008	09/25/12	U12-009		UBSR
009	11/13/12	U12-011		UBSR
010	02/27/13	TA12-101		FDP-TA
011	05/21/13	U13-006		UBSR
012	07/18/13	U13-001		UBSR
013	07/24/13	U13-008		UBSR
014	08/13/13	U13-003		UBSR
015	08/13/13	U13-014		UBSR
016	08/13/13	U13-015		UBSR
017	08/15/13	U13-016		UBSR
018	08/28/13	OG13-001		UBSR
019	04/17/14	OG14-003		UBSR
020	05/01/14	TA14-006		UBSR-TA
021	06/17/14	U14-001		UBSR
022	10/01/14	OG14-008		UBSR
023	12/05/14	TA14-008		UBSR-TA
024	02/11/15	TA14-012		UBSR-TA
025	09/28/15	OG15-001		UBSR
026	04/14/16	OG15-004		UBSR
027	03/08/16	U15-001		UBSR
028	12/27/17	A17-010		UBSR
029	01/16/18	L17-003		LE
030	05/30/18	OG17-007		UBSR
031	05/30/18	OG17-008		UBSR
032	07/17/18	LE18-004		LE
033	09/11/18	AE17-003		UBSR
034	06/12/19	AA19-004		UBSR-AA



- Roads
- Parcels
- Subdivisions
- Zoning Restrictions
- Zoning

Elbert County
Code Sec
2069 00
Date Saved: 6/18/2019 11:36:16 AM
General Disclaimer:
Arapahoe County Makes No Representation Or Warranty As To The Accuracy Of This Base Map, And Assumes No Responsibility Or Liability To Any User. This Base Map Is Not A Legal Document. It Is Intended To Serve As An Aid In Graphic Representation Only.



2067
T5S R60W

42500 E